



Lindner

Building New Solutions



Partition Systems





Head offices in Arnstorf, Germany



Complete manufacturing with „vertical integration“

- Production lines for metal ceilings with a capacity of over 15 million ft² (1.4 Mio. m²) for linear panels, mega panels, canopy ceilings and customized panels (such as curved, triangular or trapezoidal shaped)
- Own assembly for fire-rated ceilings and chilled ceilings
- Own toolmaker's shop
- Powder-coating facility with a capacity of approx. 12.4 million ft² (1.2 Mio. m²)
- Production lines for raised floor panels (facilities for flooring, formatting and trimming) with a capacity of approx. 37.7 million ft² (3.5 Mio m²)
- Production line for raised floor pedestals with a capacity of 6 million pedestals
- Manufacturing of our own wall system with F30- and F90-fire rating designs
- Manufacturing of doors
- Production lines for profiles with a capacity of 16.4 million ft (5 Mio. m)
- Production for Lindner Design Lights, which can be integrated in our ceiling systems or used as individual lights
- Manufacturing of curtain walls

PRODUCTION



Summary

2/3	LVT solid wall system LS/LM 100
4/5	LVT glass wall LS/LM 125
6/7 8/9	LVT glass wall LS/LM 137
10/11	Glas wall LW 620
12/13 14/15	Accessories
16/17	Projects

Unbelievably versatile

Lindner partition wall systems are gaining enthusiasts everywhere because of their flexibility, functionality, and wealth of visual designs. As all the systems are based on the same basic construction, our partition walls can be converted in the shortest possible time to meet changing interior requirements. All versions are possible, whether solid walls with a variety of surfaces, partly glazed walls, or complete glass walls and illuminated walls, and all can be delivered singly as required and on short delivery dates. It goes without saying that all Lindner partition walls meet even the most stringent requirements for stability, fire resistance, and sound insulation. In-house production also ensures swift reaction times to individual customer requirements.

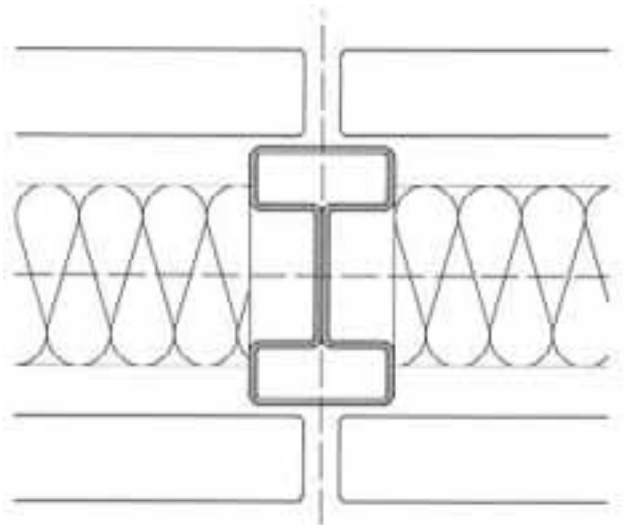


LVT solid wall system intelligent interior design

The distinguishing features of this easily removable partition wall are that it can be installed quickly and also repositioned easily in the event of later conversion work. Its simple handling means it is easy to make later changes. It can make a dominant or an unobtrusive impression, whichever the customer requires, according to which of the wide range of surfaces is chosen: metal, real wood veneer, melamine, or laminate. It can be combined with any of the LVT glazing variants and doors, and can be augmented with the Lindner organisation system.



Solid wall with door and side glass panel

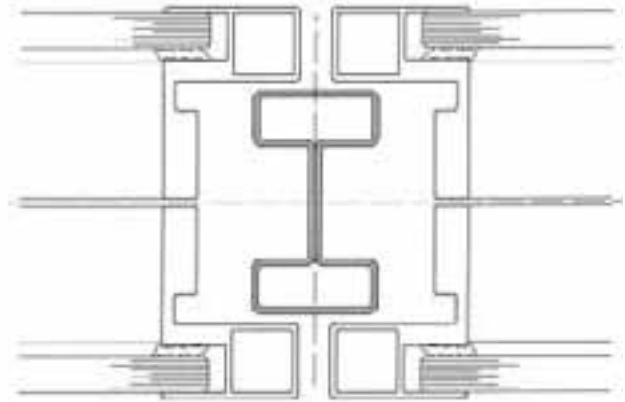


Technical data

Wall thickness:	3 15/16" and 4 15/16" (100 / 125 mm)
Fire resistance:	F0 / F30 / F90
Sound insulation:	Up to Rwp = 54 dB
Structural forces:	Area of installation 1 + 2 acc. to DIN 4103



Double-glazing with integrated door



LVT glass wall

flush-fronted double-glazing

The basic structure of this glass wall consists of two aluminum frames fitted into the system uprights. Because of its flush-fronted design this wall has a particularly transparent appearance. The integrated panes are held by a surrounding frame with a visible width of 1 3/8" (35 mm) that also allows a Venetian blind to be fitted. This wall is likewise available in the three construction versions: all-glass, half-glass and fanlight glazing.

Technical data

Full-width aluminum frame:	1 3/8" (35 mm)
Wall thickness:	3 15/16" (100 mm)
Fire resistance:	F0 / G30 and F30 as system for contract work
Sound insulation:	Up to Rwp = 47 dB
Structural forces:	Area of installation 1 + 2 acc. to DIN 4103





LVT glass wall

flush-surface bonded double-glazing

This glass wall is constructed with two aluminum frames fitted into the system uprights and panes that are bonded to the frames. The slim width of 13/16" or 1 1/4" (20 or 32 mm) gives the visual impression of a flush-surface wall made entirely of glass with an elegant degree of transparency. The bonding surfaces can be seen behind the panes of glass. Three versions: all-glass, half-glass and fanlight glazing. It is also possible to integrate motorized Venetian blinds.



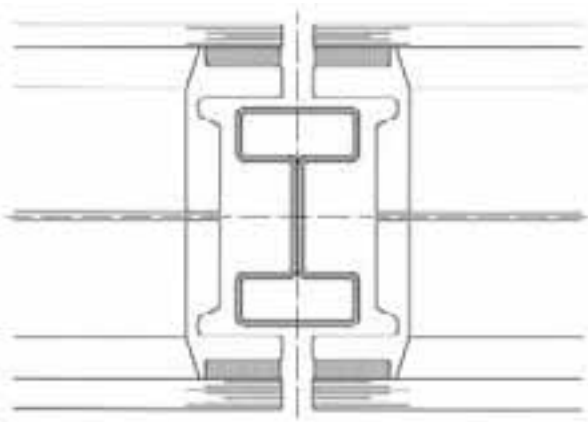
Double-glazing with a ceiling-high aluminum doorframe



System LS/LM 137



Double-glazing with an integrated sliding door



Integrated motorized Venetian blind

Technical data

Visible width of the internal aluminum frame:

13/16" or 1 1/4" (20 or 32 mm)

Wall thickness:

3 15/16" (100 mm)

Fire resistance:

F0 / G30 and F30 as system for contract work

Sound insulation:

Up to Rwp = 47 dB

Structural forces:

Area of installation 1 + 2 acc. to DIN 4103



Struhk & Partner, Braunschweig

All-glass wall with horizontal load-bearing elements

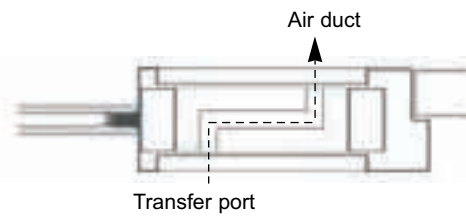


Horizontal cross-section (glass butt join)

The LW 620 all-glass wall has no vertical load-bearing elements. Only the horizontal fastening rails are attached to the floor and the ceiling. This system results in the highest possible level of transparency and creates free space for cooperative work. One special feature of the design is that it allows revolving and sliding doors and transfer port elements to be installed.



System LW 620



All-glass wall with door and transfer port element for ventilation



Vertical cross-section

Technical data

Fire resistance:	F0
Sound insulation:	All according to construction version
Glass thickness:	3/8" + 1/2" (10 + 12 mm) toughend glass



Venetian blinds

All Lindner wall systems with glazing have the possibility of screening rooms off individually. Standard Venetian blinds can be attached to provide shade and privacy.

Aluminum strips in various versions are used for the blinds in the width of 5/8", 1" or 1 3/8" (16, 25, or 35 mm). They are made of special alloy, are highly flexible, slightly arched, or partly perforated. They are easy to operate with a choice of electric motor, cord-operated reversing motor, cord/rod, chain, or crank with rotating head.

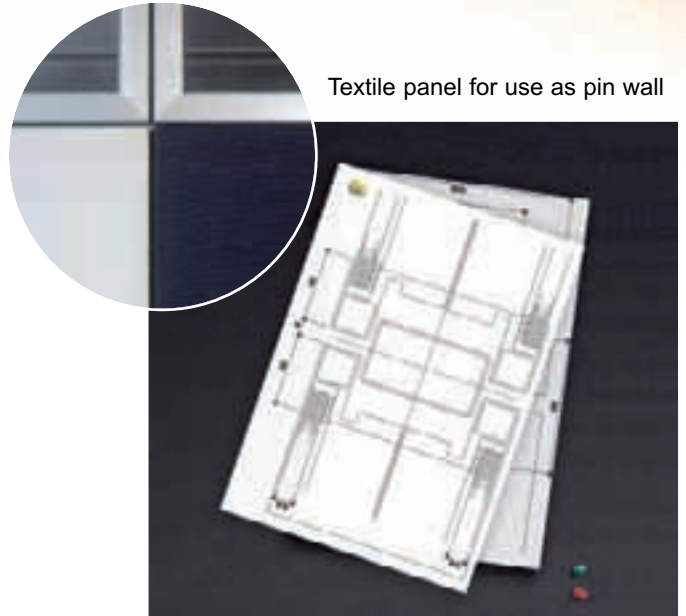


Venetian blind in double glazing

Pin-wall elements



Magnetic metal wall shell suitable for use as pin wall



Textile panel for use as pin wall



Sliding doors

It is also possible to integrate not only conventional doors into the wall elements but also sliding doors. A number of variants are possible:

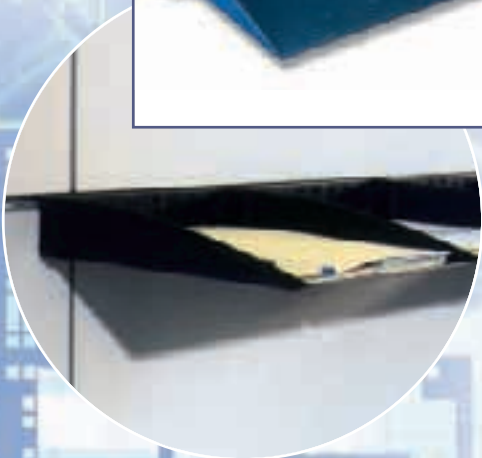
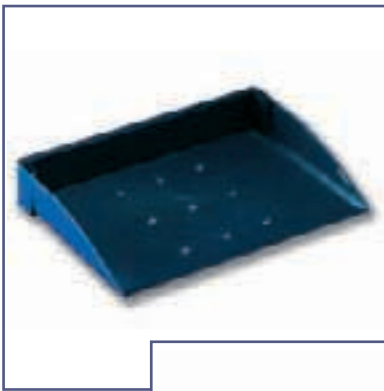
- All-glass door elements: split, with integral upper panes
 - Glass pane door element: clear or white-matt glass, split
- All sizes up to ceiling height are available to meet customer requirements.

Attachments and more

The following examples will show you the additional possibilities available with Lindner partition wall systems: furniture, organizers, filing systems, and suspended cupboards are perfectly coordinated with the Lindner system walls and can be used in a completely variable form – because, as we all know, “half your life consists of keeping things organized”.



Shelving system



Suspended cupboard



Cupboards with genuine wood veneer



Full-height cupboards with continuous glazing under the ceiling

Full-height cupboards

Lindner full-height cupboards are produced in either endless-chain form or as individual units and can be matched to the axis or the grid unit dimensions. The cupboard units can be combined in any required way.

Other plus-points:

- best possible use of space
- rational construction ensured efficient on-site installation
- minor irregularities in floors and walls can be compensated for by means of easily accessible height-adjustable feet.



Sony Center, Berlin

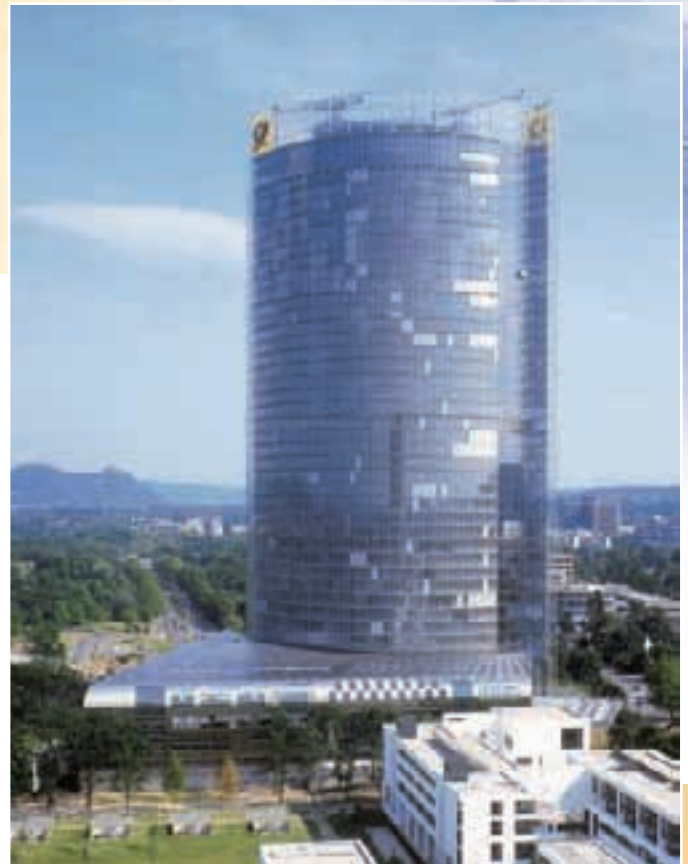
Projects world-wide



Uptown, Munich



Luton Airport, London



Post Tower, Bonn



Bundeskanzleramt, Berlin



Deutsche Bank, Frankfurt



L'Oréal, Paris



IMAX Cinema, Prague



Lindner

| Building New Solutions

Lindner USA, Inc.

info@LindnerUSA.com • www.LindnerUSA.com • www.Lindner.ag